

Are you anxious about not understanding Japanese, in cases of illness, childcare, education and disaster?



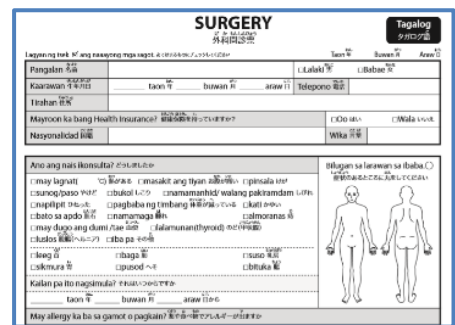
# Useful sites convenient in daily life

Information of illness, childcare, education and disaster, are introduced in the following sites for those who want information in your native languages

## ■ Multilingual medical questionnaire (18 languages)

You can tell the disease in your words.

<http://www.kifjp.org/medical/>



## ■ Medical handbook

[English, Chinese, Portuguese, Thai, Tagalog, Spanish, Korean, Indonesian, Vietnamese]

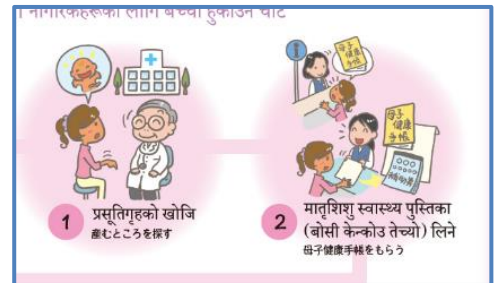
<https://www.ia-ibaraki.or.jp/kokusai/soudan/medical/>



## ■ Child care support site for foreign residents

[Chinese, Tagalog, Portuguese, Spanish, Vietnamese, English, Nepali]

<http://www.kifjp.org/child/chi/chart>



## ■ Preschool Guidebook for foreign students

[English, Korean, Vietnamese, Filipino, Chinese, Portuguese, Spanish]

[https://www.mext.go.jp/a\\_menu/shotou/clarinet/03/1320860.htm](https://www.mext.go.jp/a_menu/shotou/clarinet/03/1320860.htm)



## ■ Disaster prevention guidebook for foreigners

[English, Chinese, Korean, Portuguese, Russian]

[http://www.ifie.or.jp/ifie-disaster/bousai\\_guide2015.pdf](http://www.ifie.or.jp/ifie-disaster/bousai_guide2015.pdf)



## ■ Disaster awareness video

Disaster prevention knowledge is explained to foreigners with animation in an easy-to-understand way

[Japanese, English, Chinese, Korean, Vietnamese, Nepali, Portuguese, Spanish]

<https://www.tokyo-icc.jp/information/howto.html>



## Japanese class along the Tojo Line

Many foreigners say that Japanese is difficult. First, go to a Japanese language class at a volunteer organization where you can make friends with Japanese people. Most of them are free to learn.

### ▶▶ When working in Japan, learning Japanese is the key to have a job with good condition.

The number of foreigners working in Japan is about 1.66 million, a record of the seventh consecutive year. Many workplaces require Japanese language skills. The Japanese Language Proficiency Test is a guide to determine your proficiency.

The Japanese Language Proficiency Test has five levels of N1 to N5 and measure your communication skills in Japan with “language knowledge”, “reading comprehension” and “listening comprehension”.



### ▶▶ Let's go to a nearby Japanese class!

There are Japanese language classes in many municipalities and most of the are free. At the Fujimino International Cultural Exchange Center (FICEC), a booklet was created by combining Japanese language classes along the Tojo Line (from Wako to Higashi Matsuyama). It also has a map in Japanese. Check out the nearby Japanese classroom. You should be used to Japanese and for that it is to hear a lot and speak a lot.

東武東上線沿線日本語教室ガイド

ふじみの こくさい こうりゅう センター「にほんご きょうしつ」  
ふじみの国際交流センター「日本語教室」

駅	上福岡駅(かみふくおかえき) 西口(にしぐち) あるいて5分
教室の場所	ふじみの こくさい こうりゅう センター(ふじみせーの) 国際交流センター (FICEC)
住所	ふじみのし かみふくおか 5-4-25 〒354-0004 ふじみ野市 上福岡 5-4-25

## Café FICEC



Monthly exchange meeting is held in FICEC every month.

Why don't you talk around tea and sweets together?

- ❖ March: Cherry blossom viewing party (Ohanami)
- ❖ April: Exchange meeting and bazar
- ❖ May, June: Exchange meeting
- ❖ August: Exchange meeting and bazar

When the schedule is decided we will let you know in Facebook.

## FICEC Japanese Class



We had first calligraphy of the year on January 16.

In March, we will have a cherry blossom viewing. If you have time after learning, let's go to a nearby park to see the cherry blossom.

No matter how careful we are, we touch various things every day and are contaminated with bacteria, more than we think. Wash your hands and make gargle as a habit.



## Recruiting interpreters and translators

At Fujimino International Cultural Exchange Center is looking for interpreters and translators for Portuguese, Chinese, Tagalog, Thai, and Nepal.